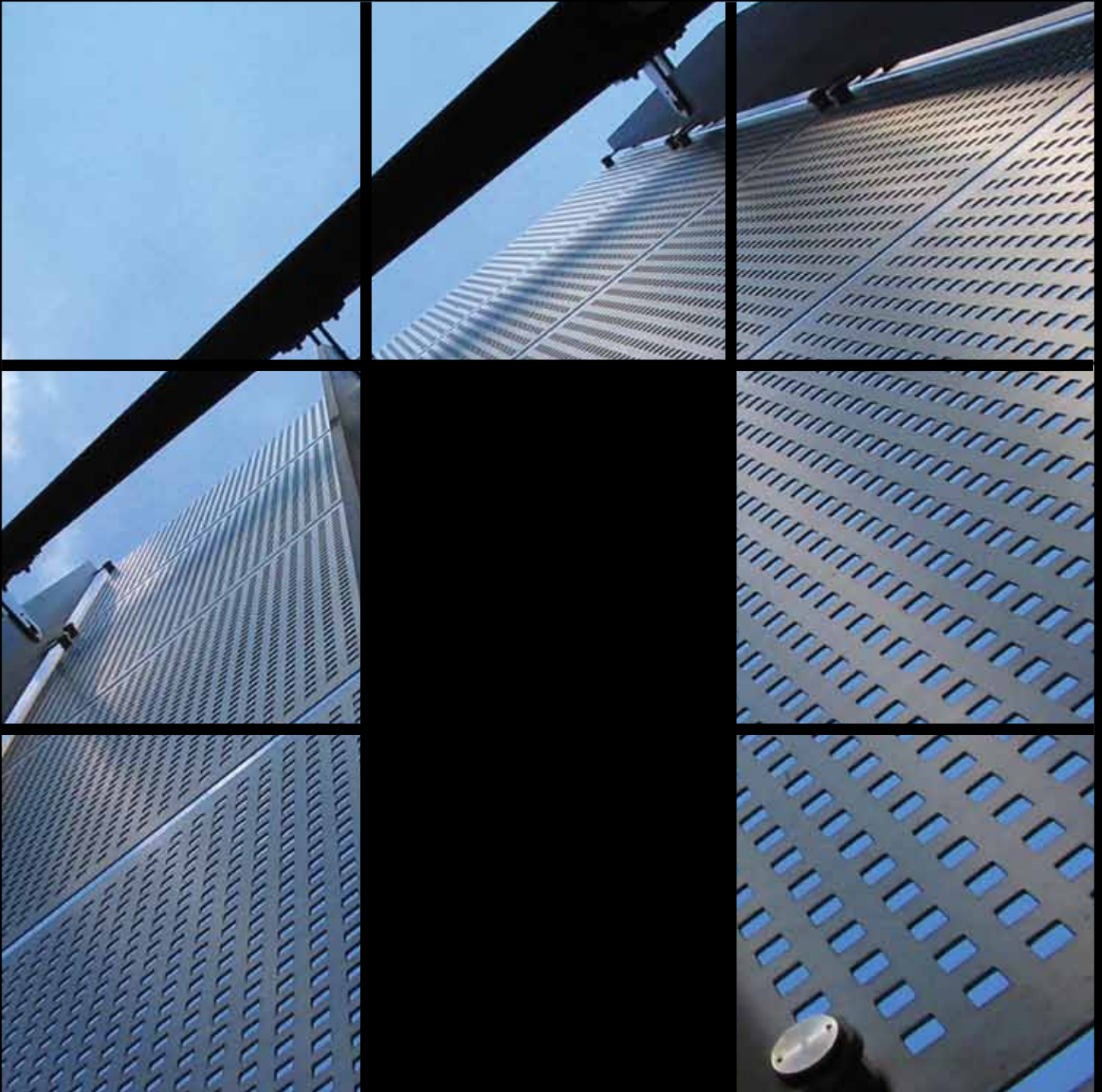


NEPEAN
Building &
Infrastructure

TM

Mastermesh® Perforated Metal



NEPEAN™ Building & Infrastructure

NEPEAN Building & Infrastructure is a division of NEPEAN, Australia's largest privately owned engineering, mining services and industrial manufacturing organisation.

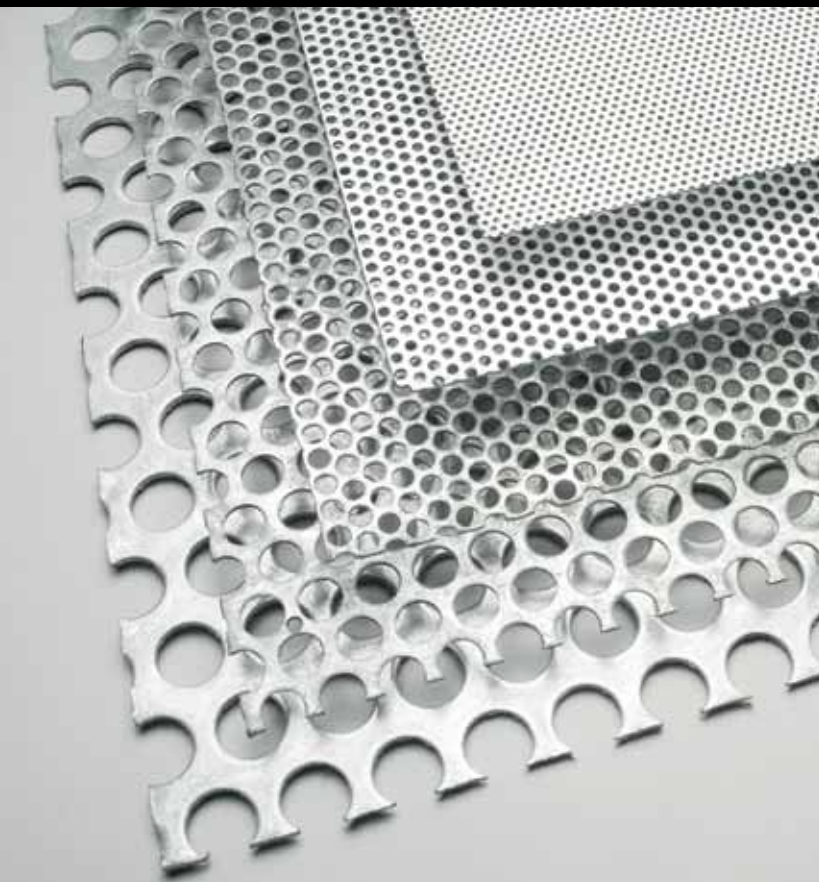
Under the Mastermesh® brand, NEPEAN Building & Infrastructure manufactures and supplies an extensive range of expanded and perforated metal products that are widely used in architectural, commercial, industrial and resources projects Australia-wide.

Materials include galvanised mild steel, stainless steel and aluminium.

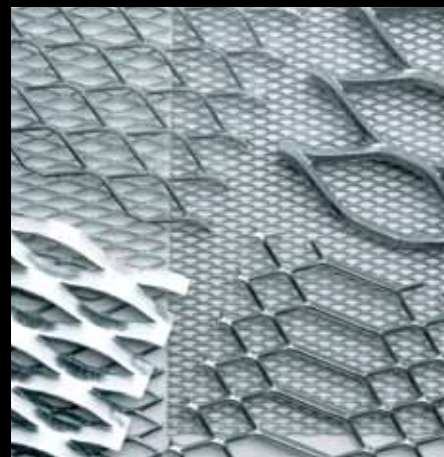
This brochure is designed to assist the architect, draughtsperson, engineer, fabricator and specifier in the correct selection of our range of perforated metal products.

CONTENTS

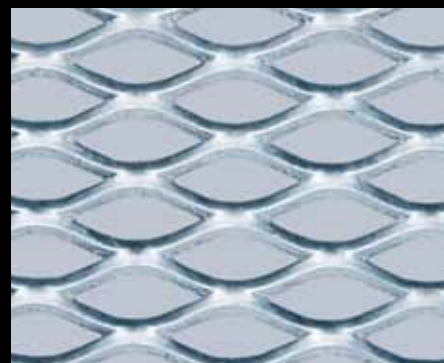
Company Profile	2
Perforated Metal Applications	3
Standard Perforated Sheets	4 – 5
Custom Perforated Sheets	6 – 7



Perforated Metal



Expanded Metal



Flormesh®

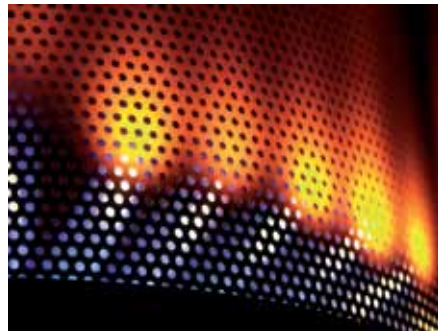
PERFORATED METAL APPLICATIONS

Versatile, attractive, functional

Perforated metals are used in a wide range of applications, most commonly as screens, filters, shields and guards, but also as structural and aesthetic elements in architectural and interior design applications.

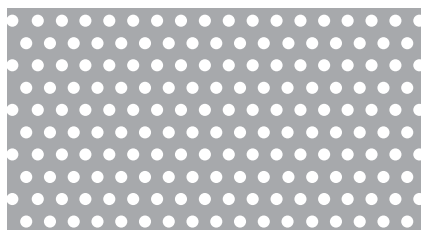
Perforated metals also have the ability to control the passage of air and other gases, liquids, light, solids, heat, electromagnetic energy and sound waves. With these properties, perforated metals have found applications in a variety of industry sectors, including:

- Aerospace
- Agricultural
- Architectural
- Automotive
- Construction
- Electronics
- Food Processing
- Furniture
- Hospitality
- Manufacturing
- Marine
- Medical
- Mining
- Petrochemical
- Retail
- Security
- Telecommunications
- Utilities

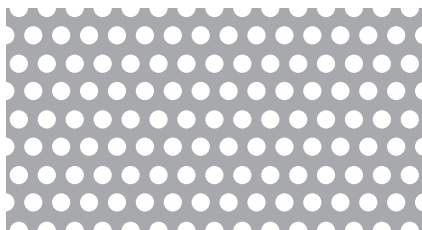


STANDARD PERFORATED SHEETS

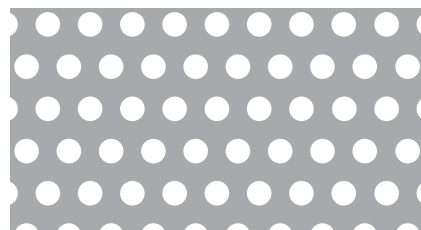
Stock Patterns – Ready for despatch Templates represent actual hole size



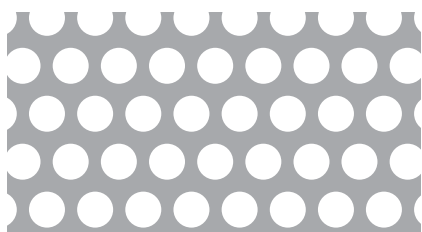
Product code P0163212



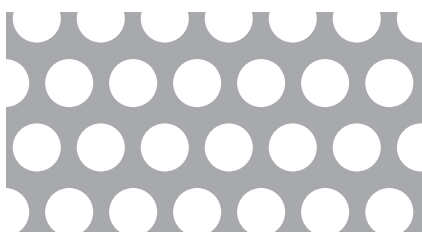
Product code P0243710



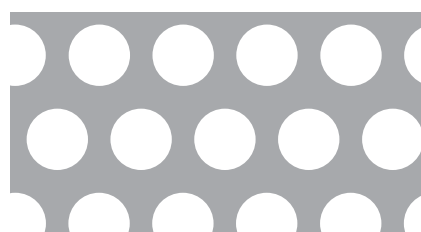
Product code P0335616



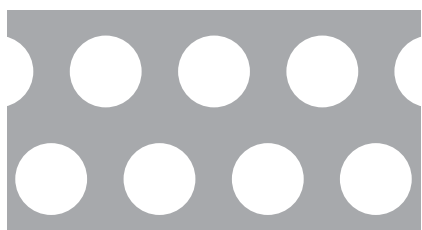
Product code P0486416



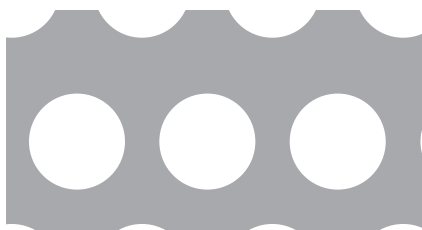
Product code P0648516



Product code P0801116



Product code P0951416



Product code P1271716



Product code P1912530

Standard Perforated Sheet Specifications – Untreated/Galvanised Steel

Product Code	Hole size (mm)	Pitch (mm)	Open Area %	Thickness (mm)	Sheet Size (mm)	Weight (kg/m ²)
P0163212	1.60	3.20	23.0	1.2	2440 x 1220	7.2
P0243710	2.41	3.66	40.0	1.0	2440 x 1220	4.7
P0335616	3.25	5.59	30.0	1.6	2440 x 1220	8.7
P0486416	4.76	6.35	51.0	1.6	2440 x 1220	6.1
P0648516	6.35	8.50	51.0	1.6	2440 x 1220	6.1
P0648530	6.35	8.50	51.0	3.0	2440 x 1220	11.5
P0801116	8.00	11.11	47.0	1.6	2440 x 1220	6.6
P0951416	9.50	14.30	40.0	1.6	2440 x 1220	7.5
P0951430	9.50	14.30	40.0	3.0	2440 x 1220	14.0
P1271716	12.70	17.27	49.0	1.6	2440 x 1220	6.4
P1271730	12.70	17.27	49.0	3.0	2440 x 1220	11.9
P1912530	19.05	25.40	51.0	3.0	2440 x 1220	11.5

All dimensions and weights are nominal

STANDARD PERFORATED SHEETS

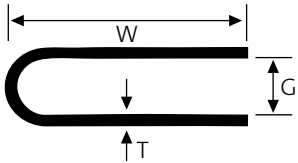


Decorative Wall Screens - Po163212

Balcony Infill Panels - GP0951430

Fencing at Concord Hospital - GP0648516

Steel Edge Trim (SETs)



Product code	Material	Standard Length	Weight "W"	Gap "G"	Thickness "T"	Weight (kg/length)
SET 2	STEEL	3000	12	2	1.0	0.61
SET 4	STEEL	3000	19	4	1.2	1.22

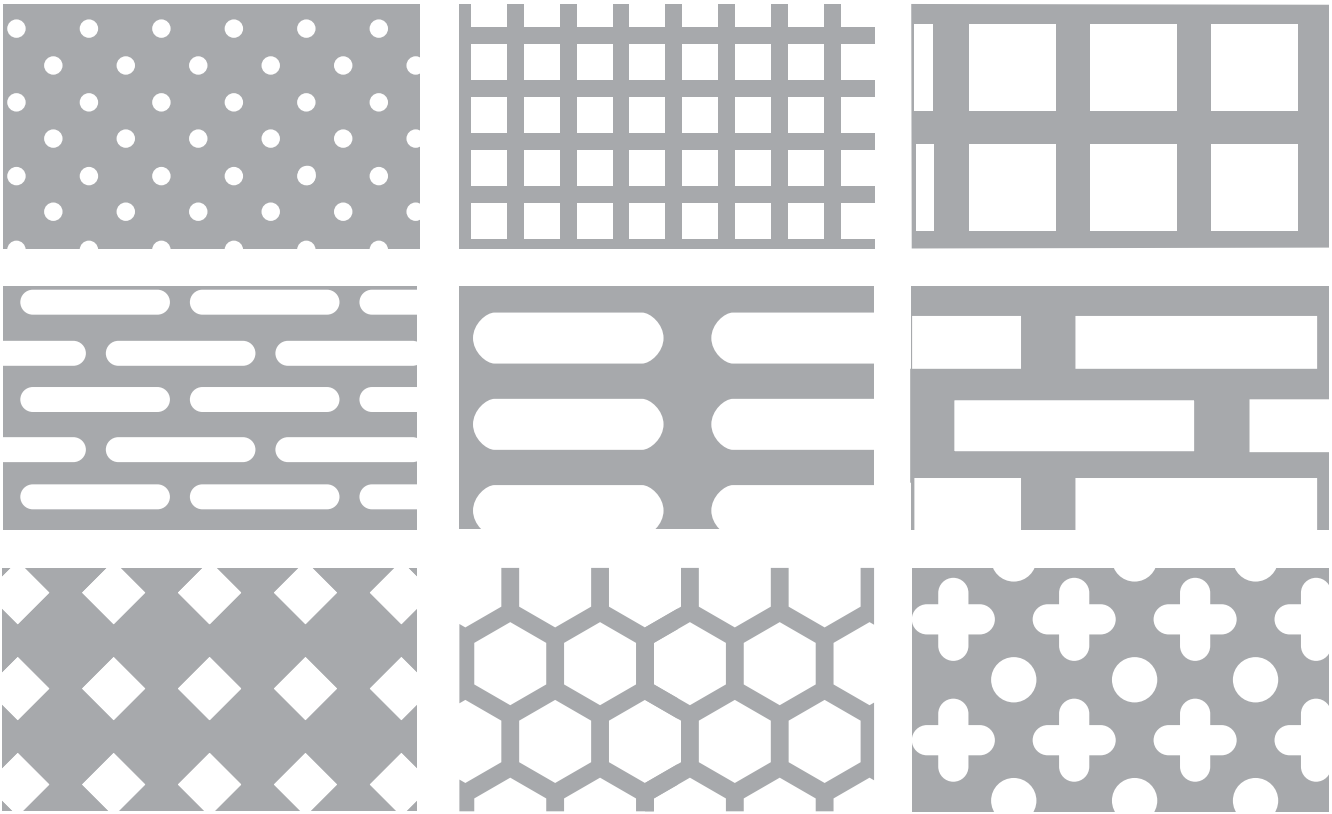
Mastermesh® Steel Edge Trims (SETs) provide an alternative to conventional methods of framing and installation. The use of SETs provides a smooth continuous frame, removing the danger of sharp serrated edges from cutting and fabrication



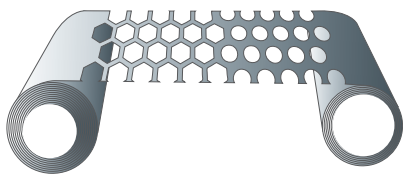
SET2 used to accommodate GP0486416 – Decorative shop fitting

CUSTOM PERFORATED SHEETS

Design possibilities are limitless, within the boundaries imposed by material specification and/or component thickness. Many other hole patterns, pitches, thicknesses, margins (unperforated edges), sheet sizes and material finishes are available on request. Conditions apply.



Architects and OEMs need not be constrained by industry standard sizes and specifications. Unique and creative panels can be tailored to each project to enhance aesthetics or improve engineering designs. Conditions apply.



Coil-to-coil technology improves yield on sheet lengths, by minimising off-cuts and waste



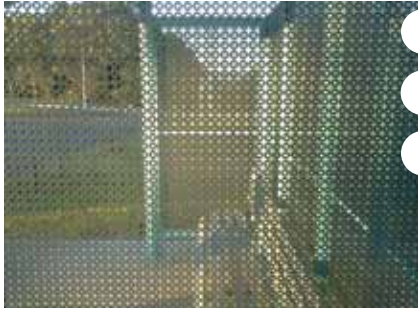
Balustrade infill panels with unperforated margins

CUSTOM PERFORATED SHEETS

NEPEAN Building & Infrastructure has provided many special custom perforated metals to suit unique applications.



Custom Perforated Sheets – Car Park Façade, Albury, NSW



Custom Perforated Sheets – Bus Shelters



Custom Aluminium Perforated Sheets – Darling Harbour Sydney, NSW



Custom Perforated Sheets – Cages



Custom Perforated Image Technology

Using the latest software, NEPEAN Building & Infrastructure now has the ability to re-create your desired image/artwork in Perforated Metal. This technology provides unique and effective panels for applications such as car park facades, sunscreens, signage and balustrades. Conditions apply.

Information contained in this brochure is supplied in good faith and with the view to assist the user in the correct selection of our products. While every care is taken to ensure that the information contained in this brochure is correct, no warranty is made nor is any condition expressed or implied. As the use of products sold is beyond our control, a condition of purchase is that the purchaser accepts responsibility for ensuring that products purchased are suitable for the intended use. NEPEAN Building & Infrastructure is committed to continual product improvement and therefore reserves the right to change details and designs without notice. © NEPEAN Building & Infrastructure, February 2013.

NEPEAN
Building & Infrastructure

HEAD OFFICE

NSW

117-153 Rookwood Road
(PO Box 57)
Yagoona NSW 2199
Australia

P: + 61 2 9707 5000
F: + 61 2 9790 6145
E: bi@nepean.com

BRANCHES

NSW (COFFS HARBOUR)

47 Wingara Drive
(PO Box 396)
Coffs Harbour, NSW 2450
Australia

P: + 61 2 6652 4100
F: + 61 2 6652 2285
E: coffs.bi@nepean.com

QLD

967 Nudgee Road
(PO Box 283)
Banyo QLD 4014

P: + 61 7 3633 1333
F: + 61 7 3633 1313
E: qld.bi@nepean.com

VIC

171 Derrimut Drive
Derrimut VIC 3030
Australia

P: + 61 3 9394 1001
F: + 61 3 9394 1441
E: vic.bi@nepean.com

WA

98 Campbell Street
Belmont WA 6104
(PO Box 267
Cloverdale, WA 6985)

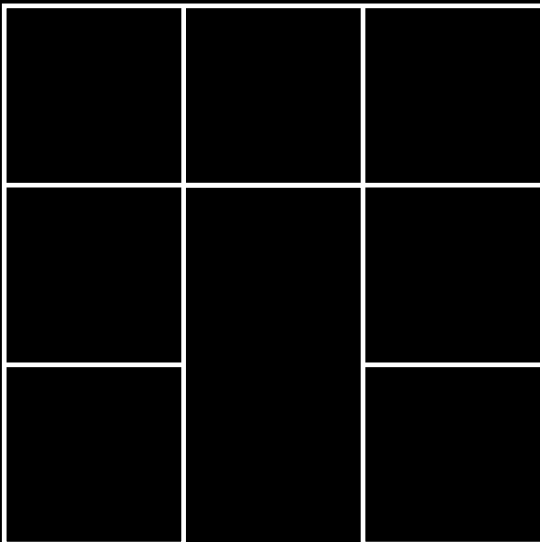
P: + 61 8 9478 1034
F: + 61 8 9277 7742
E: wa.bi@nepean.com

CHINA

12F Digital Mansion
16 Huizhandonglu Road
Torch Zone, Zhongshan City
Guangdong Province
P.R. China 528437

P: + 86 760 8992 3558
F: + 86 760 8992 3559
M: + 86 159 1334 3700 (China)
M: + 61 419 782 122 (Australia)
E: nepean.asia@nepean.com

www.nepean.com



TM